

Quick Start AMB3020

Version 1.0

AMBER wireless GmbH
Albin-Köbis-Straße 18
51147 Cologne
Tel. 02203-6991950
Fax 02203-459883
E-mail info@amber-wireless.de
Internet <http://www.amber-wireless.de>

1. Install RFID-Reader from PaLFI-Demo-Kit eZ430-PaLFI

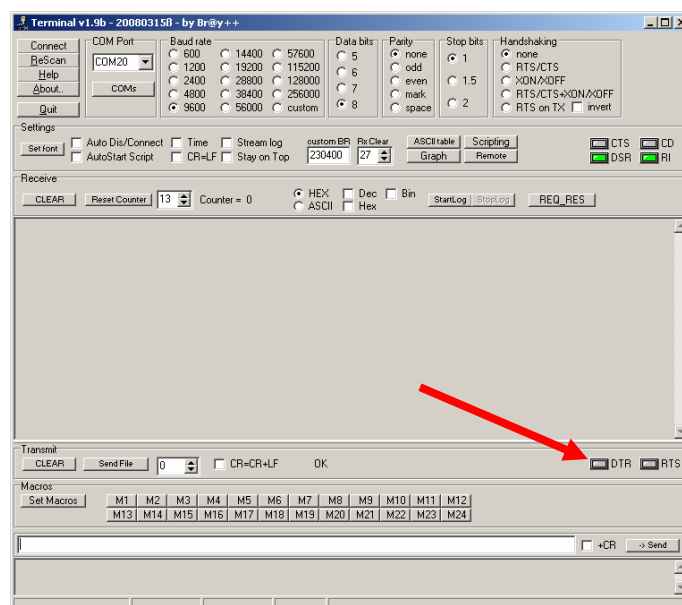
- Please follow the steps in the eZ430-PaLFI Quick start Guide to install the reader and the demo software.
- Find the right COM port for the RFID Base Station (“Texas Instruments RFID Base Station”) in the Windows Device Manager.
- Open the demo software and choose right COM port for RFID Base Station from the Expert Mode tab.
- Return to Demo Mode tab after that.

2. Install AMB8460 USB-Stick

- At first the driver has to be installed. You can download it from [5]. After extracting the zip file to your pc you can install the driver by executing “AMBDriverInstaller.exe”.
- Now you can connect the AMB8460 to a free USB slot on your pc and follow the instruction of the windows installation manager. For more information about AMB8460 / AMB8420 please note [1] and [2].

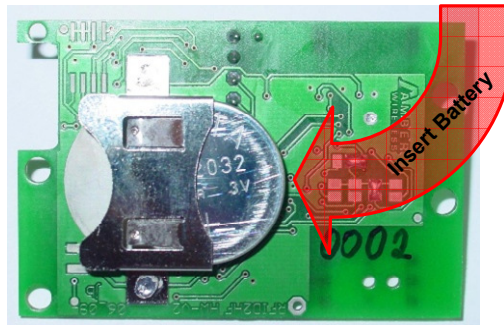
3. Install Terminal Program

- You can download a free terminal program from [3]. If you want to use your own program be sure it can handle the DTR signal manually. This is important because the AMB8460 is hold in reset state if DTR is high!
- The program can be started directly after downloading and extracting it on your PC without any further installation. In the upper left area you can select the COM port (between COM1 and COM20). If the stick is assigned to a higher port number by Windows, you can follow the instructions under [4]. After that the other settings can be selected: 9600baud, 8, n, 1, no handshaking. Click on “Connect” to open the COM port and control the DTR LED (see red arrow) if it is switched off (LED is gray = DTR-signal at low level) so that the AMB8460 is running. By clicking on the LED its state toggles between high and low.
- Received data is now displayed in the “Receive” field above.



4. Insert Battery in AMB3020-Module

- Please pay attention to the right polarity of the battery: \ominus = PCB \oplus = Battery holder



5. Read ID

- Place the AMB3020-Module in front of the reader coil (distance about 5 cm)
- Click on "Check Battery". The message from the module is displayed in the receive window of the terminal program:

AMB3020 0002

6. References

- [1] Download on <http://amber-wireless.de> → Support → Download → select "AMB8420" or "AMB2520" → „AMB8420 and AMB2520 manual“
- [2] Download on <http://amber-wireless.de> → Support → Download → select "AMB8460" → "AMB8460 manual"
- [3] <http://braypp.googlepages.com/terminal>
- [4] Download on <http://amber-wireless.de> → Support → Download → select "AMB8460" → „AN02 COM Port löschen und freigeben“
- [5] Download on <http://amber-wireless.de> → Support → Download → select "AMB8460" or "AMB2560" → „AMB8460 and AMB2560 driver and tools“ → Treiber_AMB2560_AMB8460_W2K_XP_S2K3_VISTA → AMBDriverInstaller.exe

Important notes

Disclaimer of liability

AMBER wireless GmbH believes the information contained herein is correct and accurate at the time of this printing. However, AMBER wireless GmbH reserves the right to change the technical specifications or functions of its products, or to discontinue the manufacture of any of its products or to discontinue the support of any of its products, without any written announcement and urges its customers to ensure, that the information at their disposal is valid. AMBER wireless GmbH does not assume any responsibility for the use of the described products, neither does it convey any license under its patent rights, or its other intellectual property rights, or any third party rights. It is the customer's responsibility to ensure that his system or his device, in which AMBER wireless products are integrated, complies with all applicable regulations.

Trademarks

AMBER wireless® is a registered trademark owned by AMBER wireless GmbH. Windows is a registered trademark of the Microsoft Corporation. All other trademarks, registered trademarks and product names are the sole property of their respective owners.

Limitation of use

AMBER wireless products are not authorised for use in life support appliances, devices, or other systems where malfunction can reasonably be expected to result in significant personal injury to the user, or as a critical component in any life support device or system whose failure to perform can be reasonably expected to cause the failure of the life support device or system, or to affect its safety or effectiveness. AMBER wireless GmbH customers using or selling these products for use in such applications do so at their own risk and agree to fully indemnify AMBER wireless GmbH for any damages resulting from any improper use or sale.

Use of AMBER wireless products commits the user to the terms and conditions set out herein.

© 2009, AMBER wireless GmbH. All rights reserved.

AMBER wireless GmbH

Albin-Köbis-Straße 18

D-51147 Cologne

Phone +49 (0)2203 6991950

Fax +49 (0)2203 459883

e-mail info@amber-wireless.de

Internet <http://www.amber-wireless.de>